



*WE'VE MISSED SEEING
YOU*

***WEST COUNTY
HEALTH CENTERS &
ZOOM TELEVISITS***

Simple. Convenient. Safe

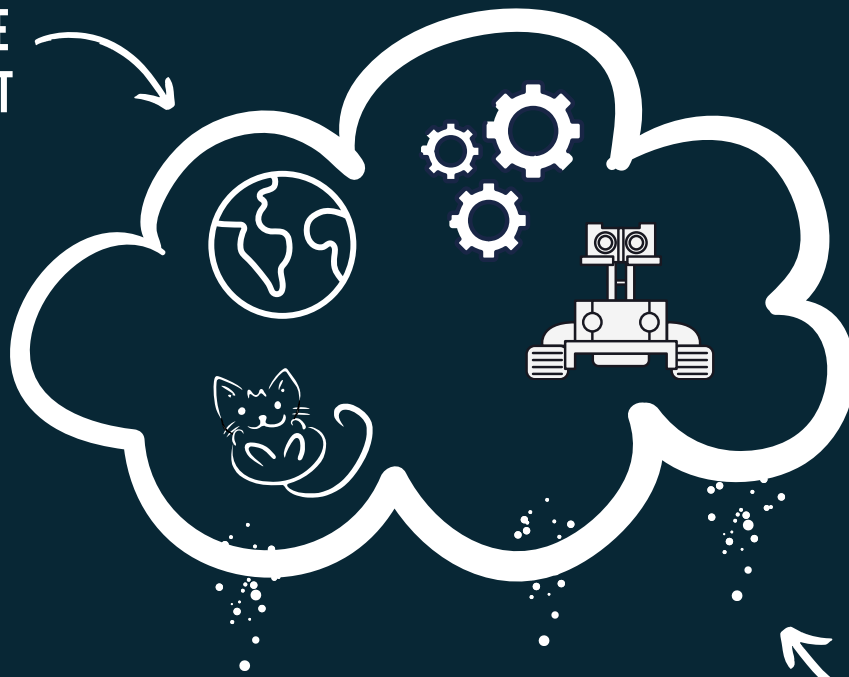
WCHEALTH.ORG



PREPARING FOR YOUR TELEVISIT

FROM YOUR PC'S BROWSER, GO TO
[HTTPS://ZOOM.US/DOWNLOAD](https://zoom.us/download)

ACTUAL PICTURE
OF THE INTERNET



MAGIC INTERNET
DUST



YOUR NEW ZOOM
PROGRAM!



West County
Health Centers

Caring for our Communities

PREPARING FOR YOUR TELEVISIT

PART DOUX



ONCE YOU HAVE DOWNLOADED
ZOOM..



...DOUBLE-CLICK ON
THE DOWNLOAD AND
INSTALL ON YOUR
COMPUTER

GOOD TO GO!



West County
Health Centers

Caring for our Communities

JOINING THE TELEVISIT

VIA THE PATIENT PORTAL... THE "PATIENT PORTAL" YOU SAY?



For those NOT in the know; the "Patient Portal" is a really really really cool way to communicate with your Care Team.

You can send and receive messages, check appointments and other neat stuff anytime day or night without having to talk to a single human!

It's also the easiest way to have a Televisit on your PC

Don't be shy -- Ask us about it!



West County
Health Centers

Caring for our Communities

JOINING THE TELEVISIT MANUALLY

**If you have chosen to
not receive Patient
Portal messages or
can't view them for
whatever reason...**



**A member of your Care Team can
call you before your appointment
with a Zoom Meeting ID Code**



**West County
Health Centers**
Caring for our Communities

JOINING THE TELEVISIT MANUALLY

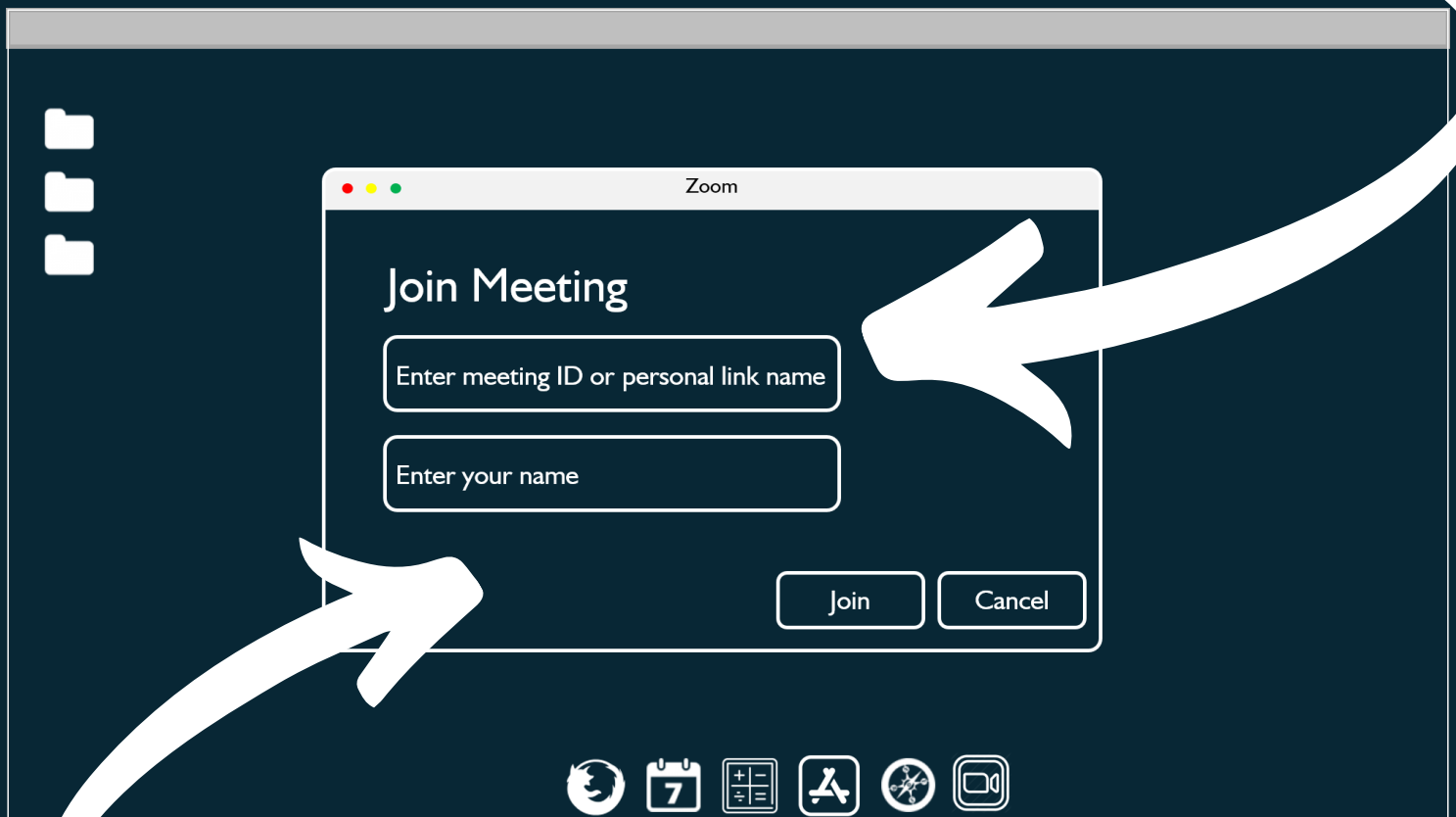
When you have the Meeting ID...



launch Zoom on your PC

JOINING THE TELEVISIT MANUALLY

Type the Meeting ID in the top
box



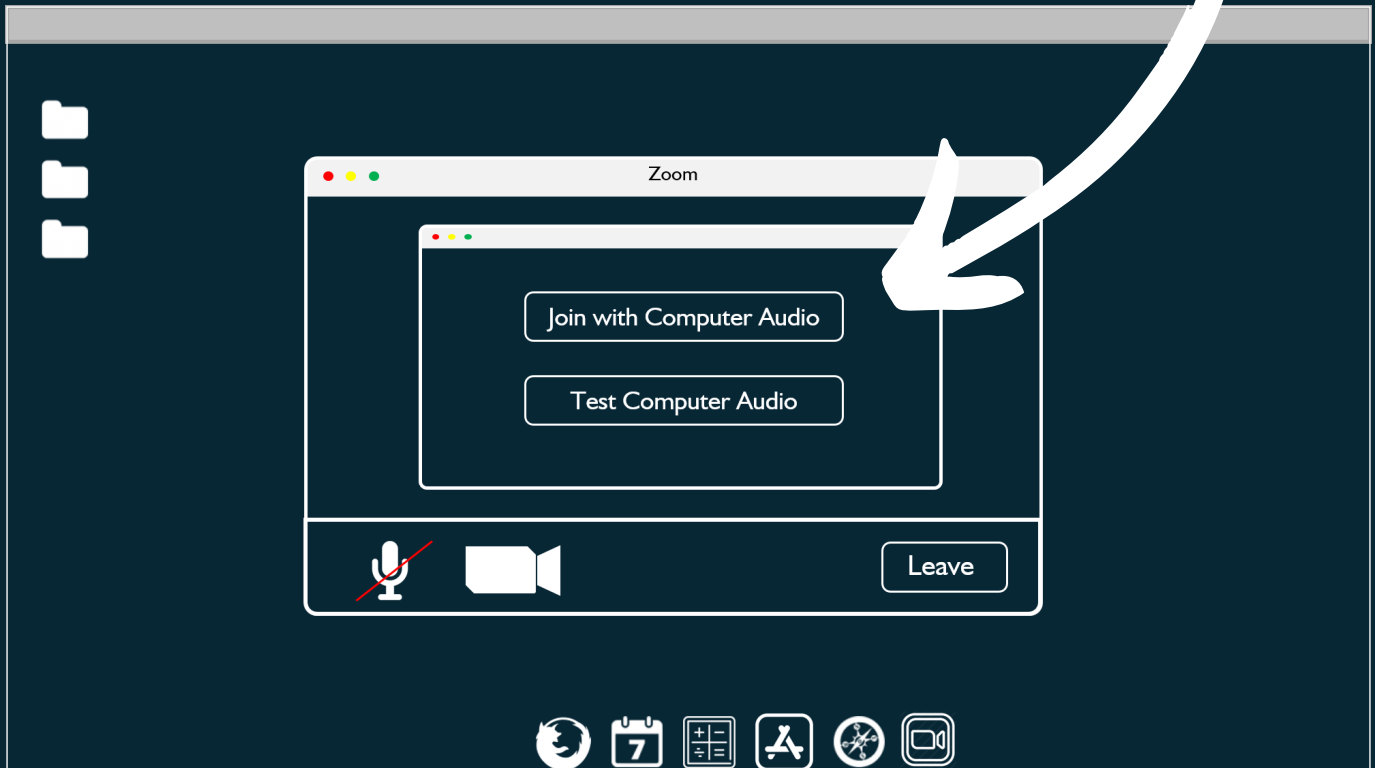
The image shows a screenshot of the Zoom application interface. A central window titled "Zoom" contains a "Join Meeting" dialog box. The dialog box has two input fields: the top one is labeled "Enter meeting ID or personal link name" and the bottom one is labeled "Enter your name". Below these fields are two buttons: "Join" and "Cancel". A large white arrow points from the top right of the screen towards the "Enter meeting ID" field. Another large white arrow points from the bottom left of the screen towards the "Enter your name" field. The Zoom desktop client interface is visible in the background, including a sidebar with folder icons and a taskbar at the bottom with various system icons.

Type your legal name (and your preferred name in
parenthesis) here.

JOINING THE TELEVISIT

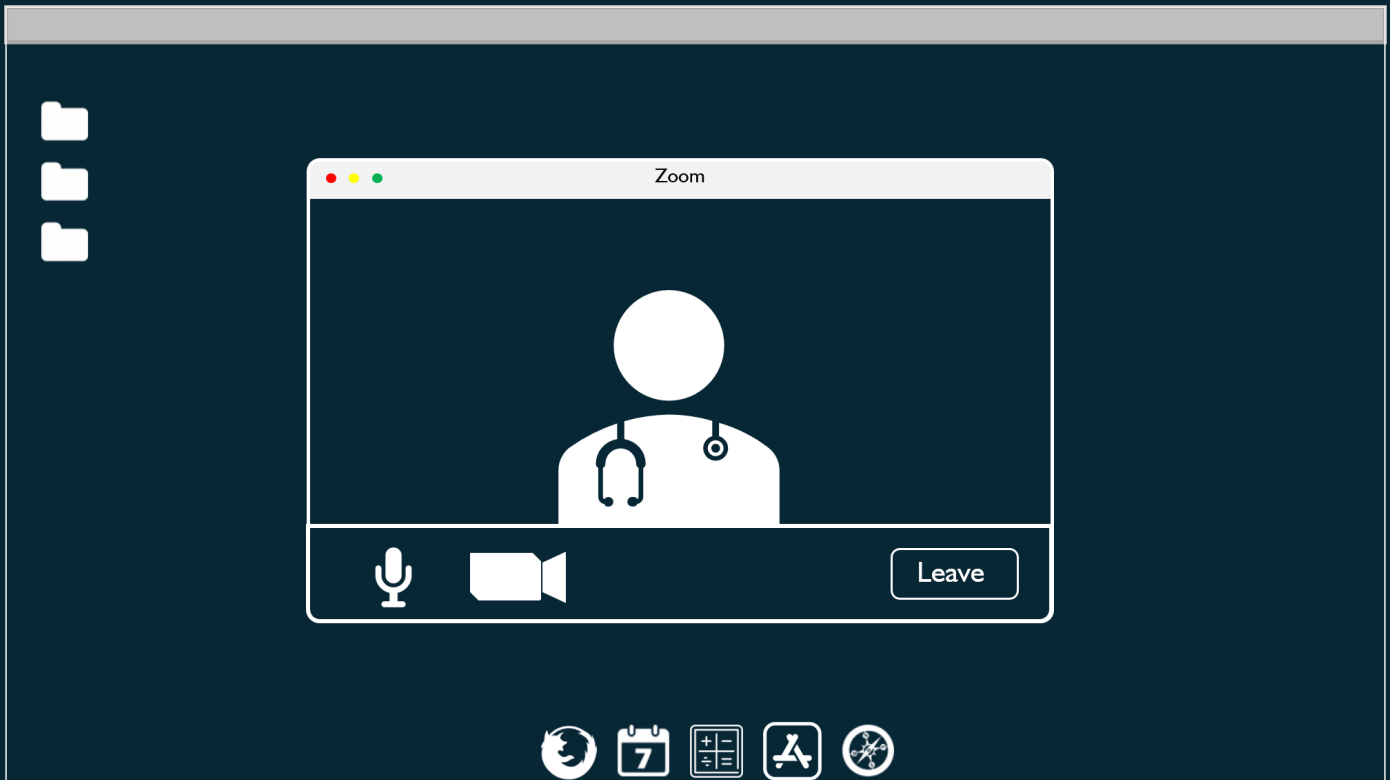
REACHING THE MOUNTAIN TOP

We're there!! Click the "Join with Computer Audio" button



TELEVISIT

THE MOTION PICTURE



Have a good visit!
Be well :-)



West County
Health Centers
Caring for our Communities